



**HIPPO  
FILTERS**  
LOVE DIRT & WATER

**FT**  
Filtertechnik  
FIRST FOR FILTRATION

# BD5000



The Portable Hippo Filtration System  
Twin Filter Configuration



- OILS
- DIESEL
- KEROSENE
- BIO-ETHANOL
- TURBINE OILS
- HEATING OILS
- PROCESS FLUIDS
- WATER BASED FLUIDS
- BY-PASS FILTRATION SYSTEMS
- FULL-FLOW FILTRATION SYSTEMS

Removes Dirt & Water



BEFORE & AFTER



**HIPPO  
FILTERS**  
LOVE DIRT & WATER

## Introduction

Our popular Hippo Filter system is now available in a twin configuration, providing twice the pioneering performance. Standard in-line filters generally filter down to 10-20 $\mu\text{m}$  efficiency, despite the most abrasive contaminants being the sub 5 $\mu\text{m}$  particles. With this in mind, the Hippo filters at the heart of the BD5000 are capable of removing harmful solid contaminants down to under 3 $\mu\text{m}$ . Moreover, utilising high performance filtration principles, they are able to remove both particulate and water with ease.

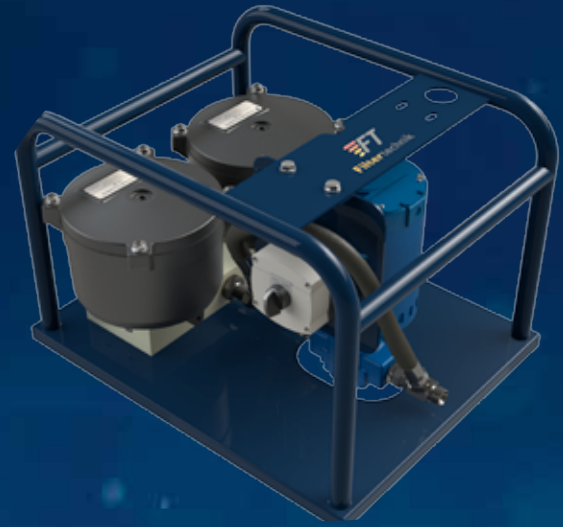
Being fully portable for ease of manoeuvre and, in addition, coming with our high capacity, inexpensive cartridges fitted as standard, the BD5000 is the ultimate portable, low cost filtration solution.

## Features

- /// Dual removal of water and solid contaminants
- /// Fitted with two super duty filter housings
- /// Up to 10 L/min flow rate
- /// Pressure gauge filter blockage indication
- /// Rugged gear pump
- /// 3 metre suction and return hoses
- /// Universal 240 or 110Vac - 50 or 60Hz supply
- /// Suitable for most diesel, kerosene, biodiesel (B100) and oil applications

## Benefits

- /// Low cost consumables
- /// Simple installation
- /// Robust design
- /// Compact footprint
- /// Easily transportable
- /// High performance filtration efficiency to 2.8 micron
- /// Up to 1kg particulate removal and 0.7 litre water removal per cartridge
- /// Removes dirt and solid contamination down to NAS 5 ISO 14/9 or better



CONNECT TO YOUR PARTICLE PAL  
FOR REAL TIME CLEANLINESS,  
TRENDING AND ARCHIVE CREATION

## EXTEND YOUR OIL LIFE BY UP TO 10 TIMES

The Hippo Filters high performance cartridges allow for the removal of ultra-fine particles and debris, thereby immediately reducing the risk of contamination-induced damage to parts and machinery. By fitting a Hippo filter, you can guarantee your oil (lubricating, hydraulic and gear) remains clean and dry and, in turn, ensure that the oil remains in excellent condition for up to 10x longer.



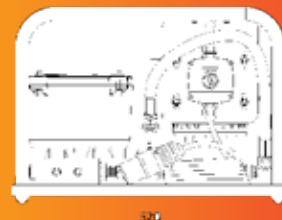
The BD5000 has been extensively used in the construction, marine and injection moulding sectors both within the U.K and internationally.



## BD5000 - TECHNICAL SPECIFICATION

Model	BD5000
Dimensions	575 mm (W) 420 (D) 370 (H)
Flow Rate	10 L/min
Temperature	60°C maximum
Dry weight	20 Kg
Frame	Mild Steel
Mounting	Manifold (twin pot)
Finish	Powder coated
Current	3 Amps / 6 Amps
Switch	Overload contactor
Power	Universal 240 or 110 Vac
Frequency	50 or 60 Hz supply
Pump	Gear pump
Duty Cycle	Continuous
Filtration	Solid particulate down to 2.8 $\mu\text{m}$ Water glycol - able to retain 800 ml (dependent on chosen cartridge) Optional SRLT 6" elements to take solid particulate down to under 1 micron absolute
Bypass (Pump)	Cracking (4 bar) 58 psi
Filter Indicator	Mechanical Pressure gauge
Pressure	10 bar maximum
Medium	Diesel, Oils, Kerosene, Bio-Ethanol, Turbine Oils, Process fluids, Heating oils and Water based fluids.
Connections	3/8" BSP (F) or 1/2" BSP (F)

\* Technical Specification could change at any time







**HIPPO  
FILTERS**  
LOVE DIRT & WATER

## HIPPO SYSTEMS AND ELEMENT OPTIONS

The BD5000 is one of many Hippo Filtration solutions. The Hippo is available on its own, as a four, six or eight configuration along with your choice of elements.



Hippo Filter -  
FTP 180



Twin Hippo Filter with  
SRLT option - BD5000



6 Hippo Configuration  
FTP-180-6



**Cellulose Element: part code: SDFC (W2) Disc**  
Ideal for most oils and fuels.

- /// Solid removal to 2.8µm
- /// Wide range of oil and fuel compatibility
- /// Economic cartridge option



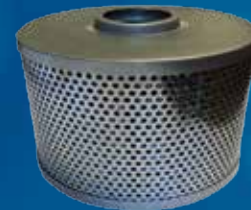
**Polypropelene Element: part code: SDFC (W2P)**  
Designed for use with water based oils.

- /// Cleans oil without removing water content
- /// Ideal for water glycol and fire resistant fluids
- /// Flow rates of up to 10 l/min per cartridge



**VDMW Element - Part code: VDMW-180**  
Designed for water removal applications, these long-life cartridges will continually remove water from oils and fuels.

- /// Long life water removal cartridge
- /// Contains Filtasorb water removal media
- /// Ideal for wet environments; marine, paper mills
- /// Flow rate recommendations: 3 l/m per cartridge



**Pleated Element: Part code: MM4627-A1**  
This cartridge is designed for use with hydraulic oils. High flow rates can be achieved without sacrificing filtration efficiency.

- /// Flow rates of up to 22 l/min per cartridge
- /// 10µm absolute filtration efficiency
- /// Low pressure drops
- /// High dirt holding capacity
- /// For use on hydraulic and lubricating oils