



**HIPPO  
FILTERS**  
LOVE DIRT & WATER

**FT**

**Filtertechnik**

# FIRST FOR VERSATILITY

THE HIPPO FILTER SYSTEM



- OILS
- PETROL
- DIESEL
- KEROSENE
- BIO-ETHANOL
- TURBINE OILS
- HEATING OILS
- PROCESS FLUIDS
- WATER BASED FLUIDS
- BY-PASS FILTRATION SYSTEMS
- FULL-FLOW FILTRATION SYSTEMS

Removes Dirt & Water



BEFORE & AFTER



### WHY DO I NEED A HIPPO FILTER?

Standard in-line filters mostly filter down to 10-20 micron efficiency. The most harmful contaminants in oil are sub 5 micron particles, these are also the most abrasive. The Hippo filter is capable of removing harmful solid contaminants down to under 3 microns.

### WHY SHOULD I USE A HIPPO FILTER?

FACT: Effective filtration will extend the life of your machinery and maintain oil & fuel cleanliness.



BEFORE

AFTER

### SIMPLE INSTALLATION:

- Water and Solid Particulate Removal
- The Hippo filter can be fitted quickly and simply by approved mechanics.
- Low cost housing and replacement elements
- The Hippo Filters high performance cartridges allow for the removal of ultra-fine particles and debris, thereby immediately reducing the risk of contamination-induced damage to parts and machinery.

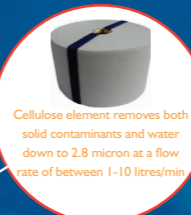
The Hippo series can be used to enhance the life and performance of other, more expensive system filters. Wear and tear is greatly reduced by effective removal of harmful particulate.

With today's machinery operating under increasingly fine tolerances, the removal of particulate and moisture down to acceptable levels is paramount.

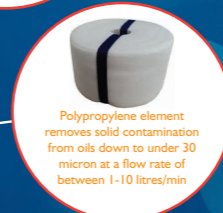
### FEATURES AND BENEFITS:

- Eliminates water from oil/fuels using cellulose elements
- Eliminates oil from water using polypropylene elements
- Does not remove additive packages
- Extends oil/fuel drain intervals
- Increases service intervals
- Provides continuous protection
- Environmentally friendly
- Reduces machine downtime
- Removes dirt and solid contaminants down to NAS 5 ISO 14/9 or better

### One Housing Many Applications



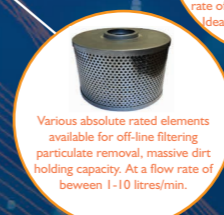
Cellulose element removes both solid contaminants and water down to 2.8 micron at a flow rate of between 1-10 litres/min



Polypropylene element removes solid contamination from oils down to under 30 micron at a flow rate of between 1-10 litres/min



Variable Depth Media Element is designed for water removal from oils/fuels. Able to retain 800 ml of water in one pass. At a flow rate of between 1-10 litres/min. Ideal for wet environments.



Various absolute rated elements available for off-line filtering particulate removal, massive dirt holding capacity. At a flow rate of between 1-10 litres/min.

### FUEL POLISHING

Fuel cleanliness is very important to modern diesel engines. Hippo filters remove both contamination and water cost effectively.

### EXTEND YOUR OIL LIFE BY UP TO 10 TIMES

By fitting a Hippo filter, you can ensure your oil (lubricating, hydraulic or gear oil) remains clean and dry. This will ensure that the oil remains in excellent condition for up to 10 times longer



## HIPPO SYSTEMS AND ELEMENT OPTIONS

The Hippo system is available on its own, as a twin, four, six or eight configuration along with your choice of elements.



Hippo Filter -  
FTP 180



Twin Hippo Filter -  
BD5000



6 Hippo Configuration  
FTP-180-6



**Cellulose Element: part code: SDFC (W2) Disc**  
Ideal for most oils and fuels.

- /// Solid removal to 2.8 um absolute
- /// Wide range of oil and fuel compatibility
- /// Economic cartridge option



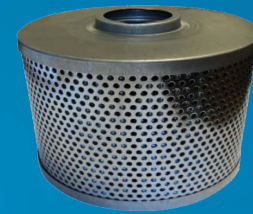
**Polypropelene Element: part code: SDFC (W2P)**  
Designed for use with water based oils.

- /// Cleans oil without removing water content
- /// Ideal for water glycol and fire resistant fluids
- /// Flow rates of up to 10 l/min per cartridge



**VDMW Element - Part code: VDMW-180**  
Designed for water removal applications, these long-life cartridges will continually remove water from oils and fuels.

- /// Long life water removal cartridge
- /// Contains Filtasorb water removal media
- /// Ideal for wet environments; marine, paper mills
- /// Flow rate recommendations: 3 l/m per cartridge



**Pleated Element: Part code: MM4627-A1**  
This cartridge is designed for use with hydraulic oils. High flow rates can be achieved without sacrificing filtration efficiency.

- /// Flow rates of up to 22 l/min per cartridge
- /// 10um absolute filtration efficiency
- /// Low pressure drops
- /// High dirt holding capacity
- /// For use on hydraulic and lubricating oils

**CALL US FIRST AND REQUEST MORE INFORMATION ABOUT  
OUR ENTIRE RANGE OF ADVANCED SOLUTIONS  
FREEPHONE 0800 0087 456 OR EMAIL [sales@filtertechnik.co.uk](mailto:sales@filtertechnik.co.uk)**



**Filter**technik

Filtertechnik Ltd, 1 Central Park, Lenton Lane, Nottingham, NG7 2NR  
Tel: +44 (0) 115 9003 600 Fax: +44 (0) 115 9868 875  
Free Phone: 0800 0087 456 Email: [sales@filtertechnik.co.uk](mailto:sales@filtertechnik.co.uk)

[www.filtertechnik.co.uk](http://www.filtertechnik.co.uk)