



Filtertechnik

Filtration, Purification &
Separation Solutions

FREEPHONE:
0800 0087 456

FIRST FOR VERSATILITY

THE HIPPO FILTER SYSTEM



- Full-flow filtration systems
- By-pass filtration systems
- Water Based Fluids
- Process Fluids
- Heating Oils
- Turbine Oils
- Bio-ethanol
- Kerosene
- Diesel
- Petrol
- Oils



Before After

Why do I need a Hippo Filter?

Standard in-line filters mostly filter down to 20 micron efficiency. The most harmful contaminants in oil are sub 5 micron particles, these are also the most abrasive. The Hippo filter is capable of removing harmful solid contaminants down to 3 micron.

Why should I use a Hippo Filter?

FACT: Effective filtration will extend the life of your machinery and maintain oil cleanliness.

How often do you change your Oil?

It is a well known fact that oil and fuel cleanliness is critical. It is not uncommon for large machines to dispose of oil on a monthly basis. By fitting a Hippo filter, you will extend the lifetime of your oil.

Extend oil life up to 10 times:

By fitting a Hippo filter, you can ensure your oil (lubricating, hydraulic or gear oil) remains clean and dry. This will ensure that the oil remains in excellent condition for up to 10 times longer.

Simple Installation:

- The Hippo filter can be fitted quickly and simply by approved mechanics
- Water and Solid Particulate Removal
- The Hippo Filters high performance cartridges allow for the removal of ultra-fine particles and debris, thereby immediately reducing the risk of contamination-induced damage to parts and machinery.

The Hippo series can be used to enhance the life and performance of other, more expensive system filters. The wear and tear of hoses and fittings is also greatly reduced due to the effective removal of harmful particulate.

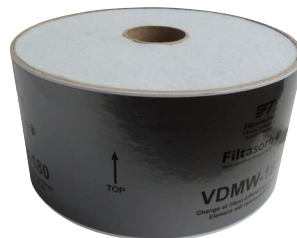
With today's machinery operating under increasingly fine tolerances, the removal of particulate and moisture down to acceptable levels is paramount.

As the Hippo system effectively removes water from the oil/fuel, the risk of fluid degradation is significantly reduced along with inevitable associated down-stream problems.

Features and Benefits:

- Eliminates water from oil using cellulose elements
- Eliminates oil from water using polypropylene elements
- Does not remove additive packages
- Extends oil drain intervals
- Increases service intervals
- Provides continuous protection
- Environmentally friendly
- Reduces machine downtime
- Removes dirt and solid contaminants down to NAS 5/ISO 14/9 or better

Cartridges Available



SDFC(W2)Disc

SDFC(W2P)

VDMW-180 with Filtasorb

MM4627-A1

Compatibility	Element Type	Achievable Cleanliness Code	Retention		Height mm	Diameter mm	Weight gm	Flowrate recommendation
			Solids gm	Water ml				
Oils & fuels	SDFC(W2)	ISO 4406 14/9 NAS class 5	Up to 2200	750	112	180	600g ±5%	1-10 l/ min per cartridge
Water glycols	SDFC(W2P)	30 micron nominal	Up to 2200	n/a	112	180	600g ±5%	1-10 l/ min per cartridge
Oils & fuels	VDMW-180 with Filtasorb	20 micron nominal	Up to 1800	800	112	180	550g ±5%	3 l/min per cartridge
Oils & fuels	MM4627A1	19/17/14- 18/16/13 10 micron absolute NAS 7	Up to 1200	n/a	112	180	800g ±5%	22 l/min per cartridge

Operating Temperature The cartridge will operate within the operating specification of engine, hydraulic and gearbox oils -10 to +120°C.

The results speak for themselves:

The fluid samples and patch slides below demonstrate the remarkable filtration capability of the Hippo series of filtration systems.

Water Removal

Before

After



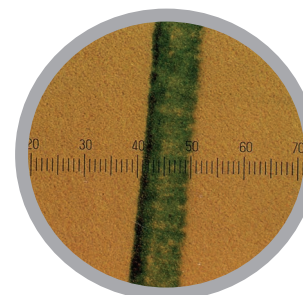
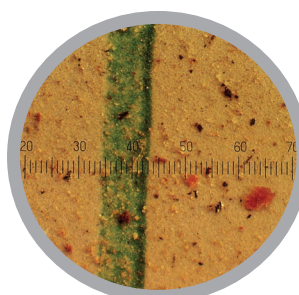
3489 ppm

85 ppm

Solid Particulate Removal

Before

After



ISO 20/19/17

ISO 13/11/8

Hippo filter housing



Order code: FTP180

- Water and particulate removal (depending on element)
- 1-10 L/M (depending on fluid viscosity)
- 10 bar maximum pressure
- 120°C maximum temperature
- 3/8" BSP (F) or 1/2" connections BSP (F)
- * Magnet option to remove metal particulate

FOR ELEMENT CODE PLEASE SEE PAGE 2

Hippo filter housing with mounting Bracket



Order code: FTP180B

- Water and particulate removal (depending on element)
- 1-10 L/M (depending on fluid viscosity)
- 10 bar maximum pressure
- 120°C maximum temperature
- 3/8" BSP (F) or 1/2" connections BSP (F)
- Complete with a mounting bracket
- * Magnet option to remove metal particulate

FOR ELEMENT CODE PLEASE SEE PAGE 2

Hippo filters mounted onto nylon manifold block



Order code: FTP180-2

- 2 x Hippo mounted on a manifold block
- Water and particulate removal (depending on element)
- 1-16 L/M (depending on fluid viscosity)
- 10 bar maximum pressure
- 120°C maximum temperature
- 3/4" BSP (M) connections
- * Magnet option to remove metal particulate

FOR ELEMENT CODE PLEASE SEE PAGE 2

Hippo - Bypass Filtration System



Order code: FTP-180-6-HP

- Off-line Hippo System
- Up to 20 L/M at 4 bar (depending on fluid viscosity)
- 10 bar maximum pressure *
- Gauge to show when filters blocked
- Water and particulate removal (depending on element)
- 120°C maximum temperature
- * Various valve arrangements can be incorporated into the inlet to allow for high pressures
- * Magnet option to remove metal particulate

FOR ELEMENT CODE PLEASE SEE PAGE 2

Oil or Fuel Polishing System



ORDER CODE: BD5000

- Static or portable
- 10 L/M Maximum flow rate (depending on fluid viscosity)
- Water and particulate removal
- Removes up to 2Kg of particulate and 0.7 litres of water per element
- Pressure gauge filter blockage indicator
- 240/110v Options
- 3 meter suction and return line hoses
- 1 meter lances on hoses

FOR ELEMENT CODE PLEASE SEE PAGE 2

Portable Oil or Fuel Polishing System



ORDER CODE: SFC-6050

- Portable filtration cart (upright sack truck)
- 10 L/M Maximum flow rate (depending on fluid viscosity)
- Water and particulate removal
- Removes up to 2Kg of particulate and 0.7 litres of water per element
- Pressure gauge filter blockage indicator
- 240/110v Options
- 3 meter suction and return line hoses
- 1 meter lances on hoses
- * Unit can be fitted with a water monitor and a particle counter

FOR ELEMENT CODE PLEASE SEE PAGE 2

Hippo Buggy



ORDER CODE: NHB600-6-xxx-PC

- Rugged portable 6 pot buggy
- 240/110 VAC 50/60 Hz operation/air drive
- 22 L/M Maximum flow rate
- Fitted with 6 x super duty hippo pots
- 10 bar maximum pressure
- Removes up to 2Kg of particulate and 0.7 litres of water per element
- Pressure gauge filter blockage indicator
- 1" Inlet/ outlet
- Sample points fitted
- Particle Counter (PC9001) with software for contamination trending
- 7 day timer with 4 x daily on/off features (optional)

FOR ELEMENT CODE PLEASE SEE PAGE 2